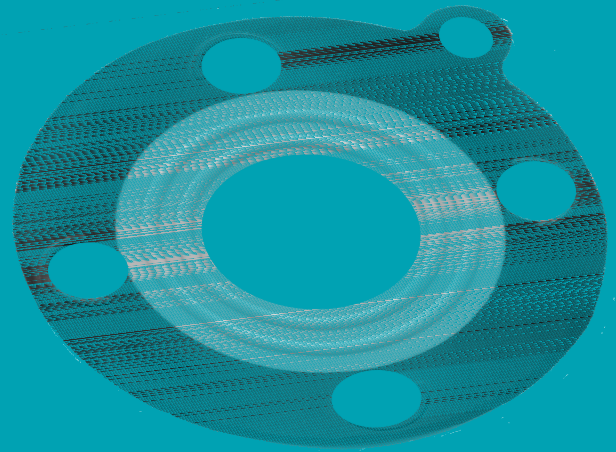


PROCO™

9013

SERIES

low torque gaskets



PROCO Style 9013 are special **low torque** Gaskets for use on plastic, fiberglass, glass or other piping which require minimal sealing forces. Manufactured of the highest quality of rubber and PTFE materials, the PROCO Style 9013 Low Torque Gasket provides sealing at greatly reduced forces. The Gaskets are designed with dual, concentric, convex molded sealing rings which allow easy sealing for both gases and liquids.

Fully molded for precise sizing, the PROCO Style 9013 is manufactured with the PTFE Film bonded to the EPDM rubber gasket. For additional sealing safety, a unique outer sealing ring around each bolt hole is provided. The outer sealing rings in conjunction with the dual, concentric, convex sealing rings provide the utmost in sealing at extremely low bolt torques.

Features:

- **Low Torque Sealing**
- **PTFE Film Bonded To Rubber Gasket To Provide High Chemical Resistance**
- **Peroxide Cure EPDM For Higher Temperature Resistance**
- **Dual, Concentric, Convex Sealing Rings**
- **Fully Molded**
- **Ring Tab For Storage Or Positioning During Installation**



9013-ET

9013-EP

Sample Specification:

Gaskets shall be full faced, low torque, fully molded EPDM with dual concentric, convex sealing rings (and PTFE film bonded to the rubber). The dimensions shall comply with 150# ANSI B16.5 drilling.

Visit Our Website: <http://www.procoproducts.com>

email: sales@procoproducts.com

Table 1: Available Materials • Temperatures • Pressures

Style	Gasket Material	Temperature Range		Max Pressure			
		Min	Max	PSI	kg/cm ²		
9013-ET	EPDM w/PTFE Film	-22°F	-30°C	300°F	150°C	300	20
9013-EP	EPDM w/Peroxide Cure	-40°F	-40°C	300°F	150°C	300	20

*Sealing Piping And
Equipment Systems*

- Notes:
1. Your specific application may require alternate materials, consult PROCO in this case.
 2. The EPDM materials have the following properties:
 - a. Hardness, 60-65 Durometer, shore A.
 - b. Peroxide Cure.



low torque gaskets

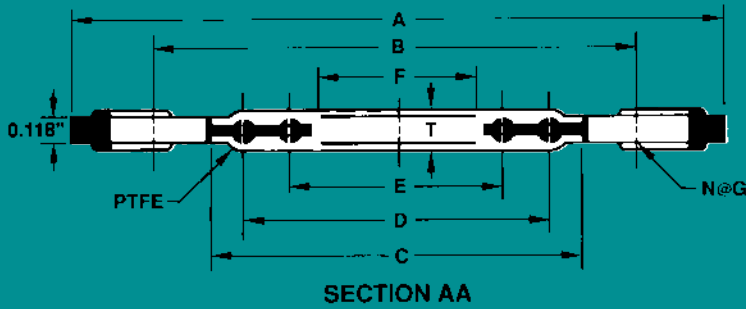


Figure 1: Style 9013-ET

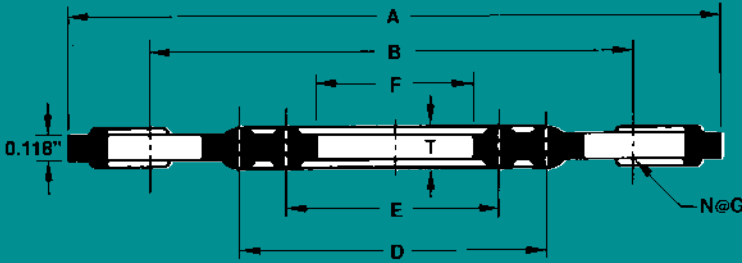
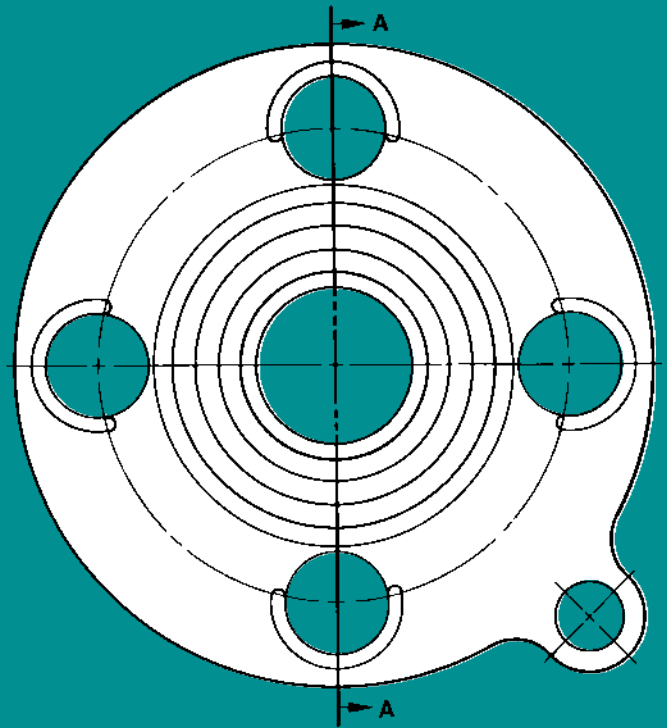


Figure 2: Style 9013-EP

Table 2: Dimensions (all in inches)

Size	Outside Diameter	Bolt Circle	O.D. of PTFE	Sealing Ring Diameter		Inside Diameter	No. of Holes	Size of Holes		Thickness
	A	B	C	D	E	F		N	G	
0.50	3.386	2.375	1.654	—	1.181	0.709	4	0.625	0.197	
0.75	3.780	2.750	2.047	1.654	1.181	0.866	4	0.625	0.197	
1.00	4.134	3.125	2.362	1.969	1.457	1.142	4	0.625	0.197	
1.25	4.528	3.500	2.756	2.323	1.811	1.496	4	0.625	0.197	
1.50	4.921	3.875	3.110	2.677	2.087	1.693	4	0.625	0.197	
2.00	5.906	4.750	3.900	3.268	2.520	2.216	4	0.750	0.197	
2.50	6.890	5.500	4.646	3.976	3.189	2.717	4	0.750	0.197	
3.00	7.402	6.000	5.188	4.409	3.622	3.150	4	0.750	0.197	
3.50	8.386	7.000	6.063	5.276	4.331	3.543	8	0.750	0.197	
4.00	8.898	7.500	6.614	5.827	4.882	4.055	8	0.750	0.197	
5.00	9.921	8.500	7.480	6.850	5.906	5.079	8	0.875	0.197	
6.00	10.905	9.500	8.346	7.717	6.772	6.024	8	0.875	0.197	
8.00	13.386	11.750	10.630	9.685	8.740	7.874	8	0.875	0.197	
10.00	15.905	12.250	12.992	11.811	10.866	10.000	12	1.000	0.236	
12.00	18.898	17.000	15.748	14.370	13.189	12.008	12	1.000	0.236	

*Larger Sizes Available Up To 24" I.D. Available Upon Request.

*Items listed above are in stock and available for immediate shipment.

Table 3: Recommended Bolt Torque

Size (All in Inches)	9013-ET EPDM w/PTFE Film		9013-EP EPDM	
	Ft-lbs	Kgf-cm	Ft-lbs	Kgf-cm
0.50	1.8	24.7	1.2	16.9
0.75	3.9	53.3	2.6	36.4
1.00	5.2	71.5	3.4	46.8
1.25	6.9	94.9	4.4	61.1
1.50	8.7	120.9	5.5	76.7
2.00	15.5	214.5	9.5	131.3
2.50	22.2	306.8	13.3	183.3
3.00	26.8	370.5	15.8	218.4
3.50	18.6	257.4	10.7	148.2
4.00	22.5	310.7	12.8	176.8
5.00	36.5	504.4	20.5	283.4
6.00	45.7	631.8	25.5	352.3
8.00	70.4	973.7	38.6	533.0
10.00	80.2	1108.9	43.3	598.0
12.00	117.0	1617.2	62.3	861.9

NOTES: 1. All Recommended Bolt Torque Values Are Based Upon Gas Sealing at 300 PSI. Bolt Torque Values for Liquid Sealing Are Approximately 30% Lower.
2. All Bolt Torque Values Are Based Upon Sealing Due to Both Inner Pressure and Flange Pressure.

Information-Ordering-Pricing-Delivery. Day or night, weekends and holidays...the PROCO phones are monitored 24-hours around-the-clock. When you have a question, call us toll-free (800) 344-3246. Weekday office hours: 8:30 a.m. - 8:15 p.m. Eastern Time.

Other PROCO™ Products For Piping Systems:

- Series 260 - Wide Arch Expansion Joints For Plastic Piping
- Series 251 - Wide Arch Expansion Joints For Piping Systems
- Series 440 - PFA Teflon Expansion Joints For Piping Systems
- Series 230 - Rubber Expansion Joints For Piping Systems

Call For A PROCO™ Catalog - Today!



2431 Wigwam Dr. (95205)
P.O. Box 590 • Stockton, CA
95201-0590 • USA

Distributed by:

Rev. 02/02/00

TOLL FREE PHONE: (800) 344-3246
FACSIMILE: (209) 943-0242
(209) 943-6088
email: sales@procoproducts.com
website: http://www.procoproducts.com

NATIONWIDE AND CANADA
INTERNATIONAL